

Human TM4SF1 Protein-VLP

Cat. No. TSF-HM001

Description

Source	Recombinant Human TM4SF1 Protein-VLP is expressed from HEK293. It contains Met1-Cys202.
Accession	P30408
Molecular Weight	Human TM4SF1 Protein has a predicted MW of 51.50 kDa.
Endotoxin	Less than 1EU per µg by the LAL method.
Purity	> 95% as determined by HPLC

Formulation and Storage

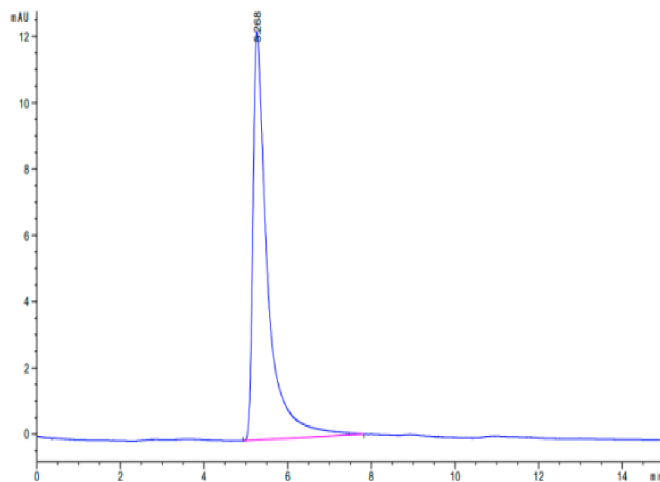
Formulation	Lyophilized from 0.22µm filtered solution in PBS (pH 7.4). Normally 8% trehalose is added as protectant before lyophilization.
Reconstitution	Centrifuge the tube before opening. Reconstituting to a concentration more than 100 µg/ml is recommended. Dissolve the lyophilized protein in distilled water.
Storage	-20 to -80°C for 12 months as supplied from date of receipt. -20 to -80°C for 3-6 months in unopened state after reconstitution. 2-8°C for 2-7 days after reconstitution. Recommend to aliquot the protein into smaller quantities for optimal storage. Please minimize freeze-thaw cycles.

Background

Transmembrane-4-L-six-family-1(TM4SF1), a four-transmembrane L6 family member, is highly expressed in various pancreatic cancer cell lines and promotes cancer cells metastasis. It is upregulated in several epithelial cancers and is closely associated with poor prognosis.

Assay Data

SEC-HPLC



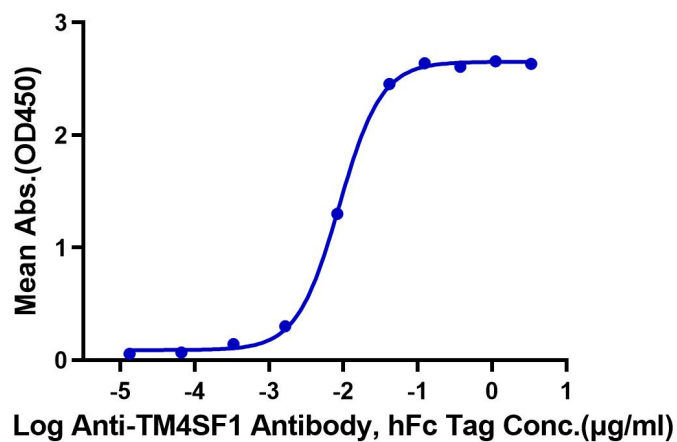
The purity of Human TM4SF1 VLP is greater than 95% as determined by SEC-HPLC.

ELISA Data

Assay Data

Human TM4SF1 VLP ELISA

0.5µg Human TM4SF1 VLP Per Well



Immobilized Human TM4SF1 VLP at 5µg/ml (100µl/Well) on the plate. Dose response curve for Anti-TM4SF1 Antibody, hFc Tag with the EC50 of 8.8ng/ml determined by ELISA.